

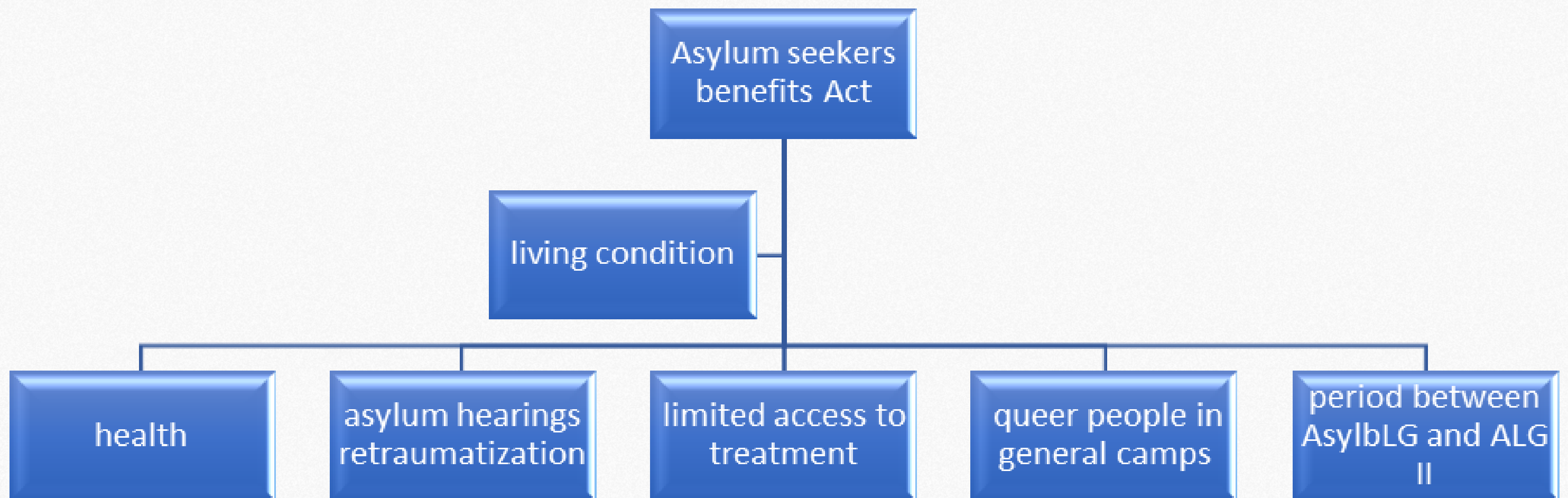


# Asylum seeker's experience of the living conditions

Dr. Ifunanya Dimaku and Michelle Kerndl-Özcan,  
Ärzte der Welt e.V.

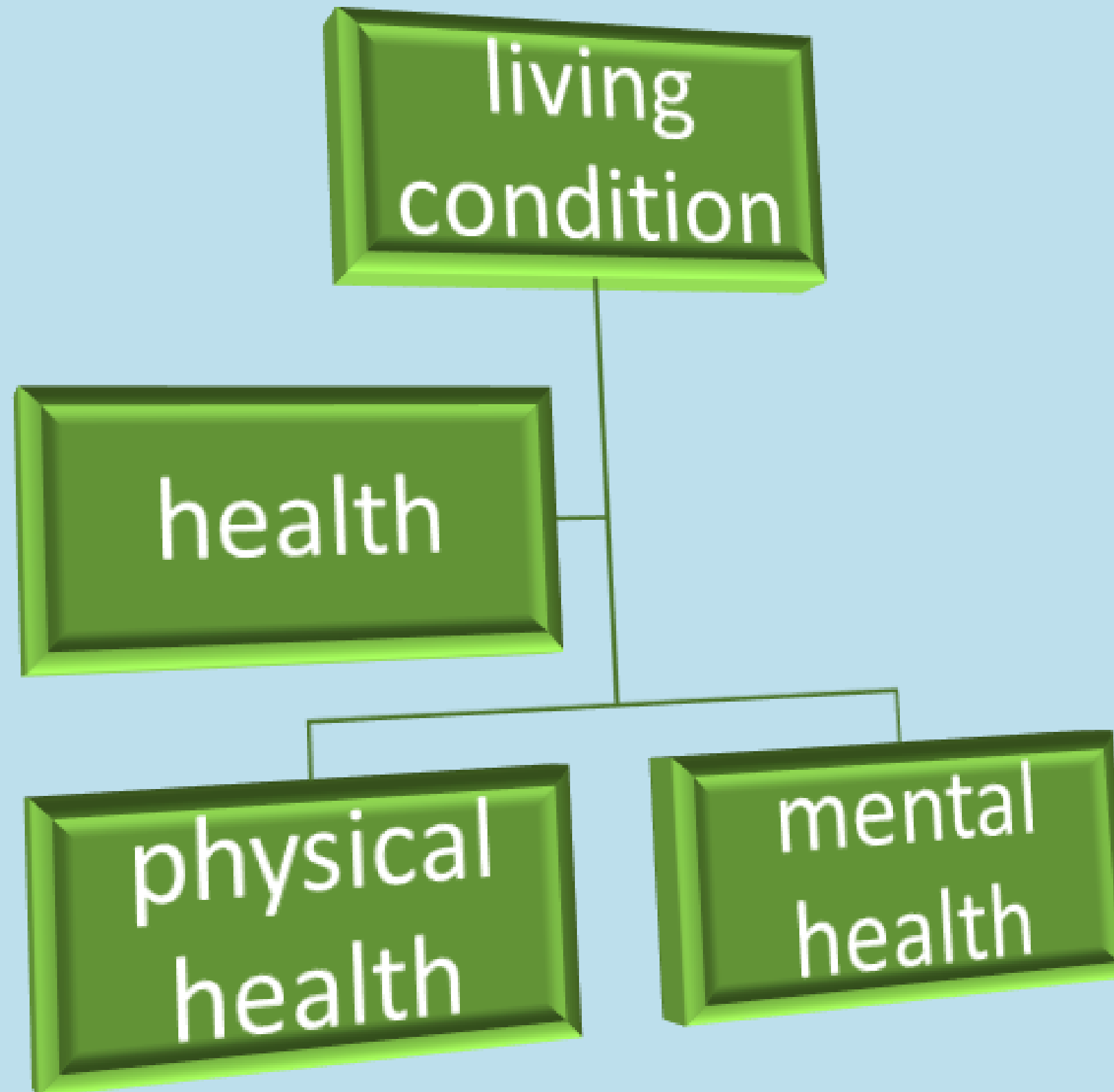


# Introduction



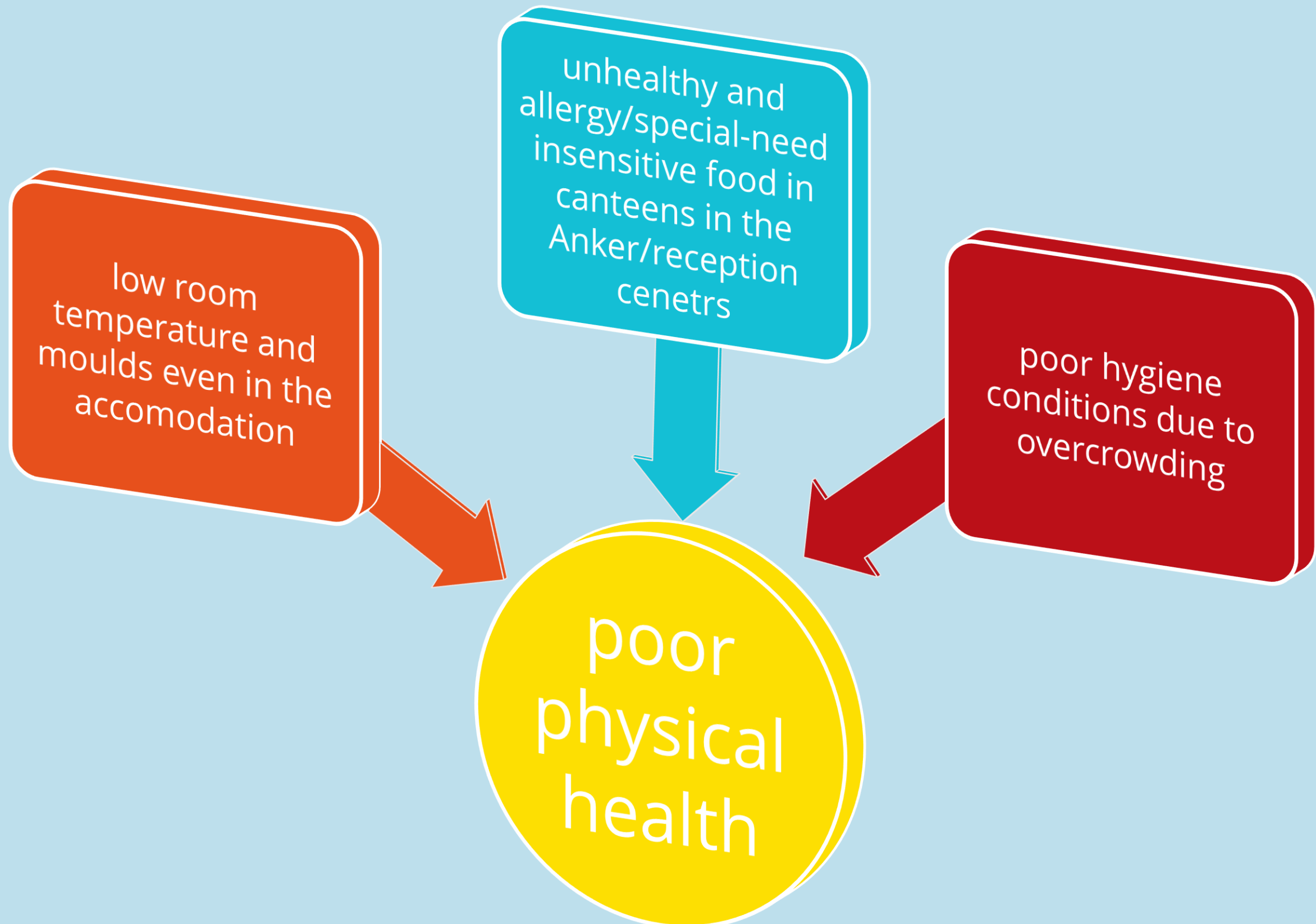


# The living condition





# Poor Physical health







# Impact on mental Health





# Asylum hearings re-traumatization

a system that  
forgets the  
humanity of  
others



structures that  
are inhumane,  
discriminatory,  
and outdated

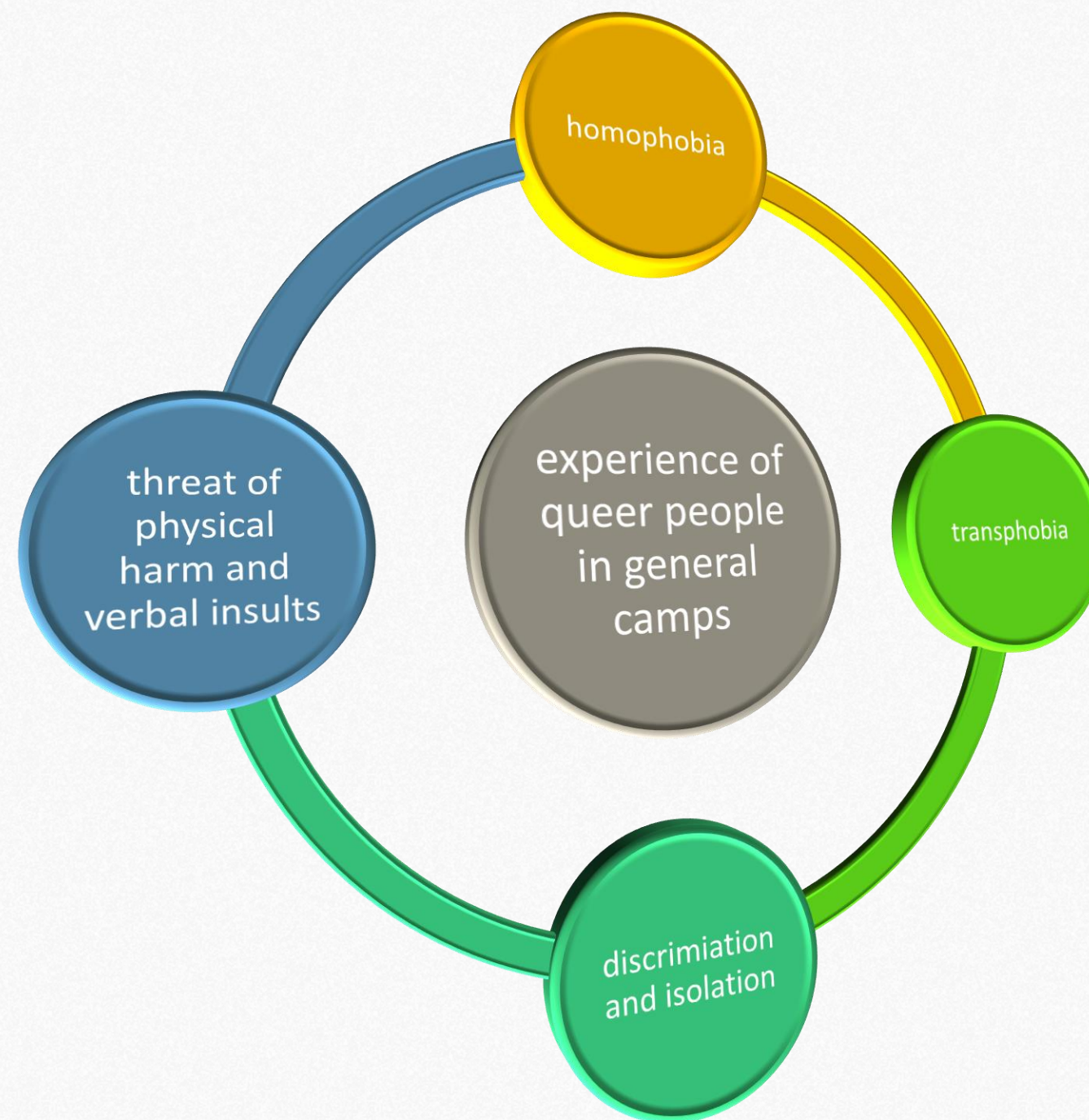


re-traumatization  
of the most  
vulnerable group  
of people  
through an  
inhumane  
hearings.



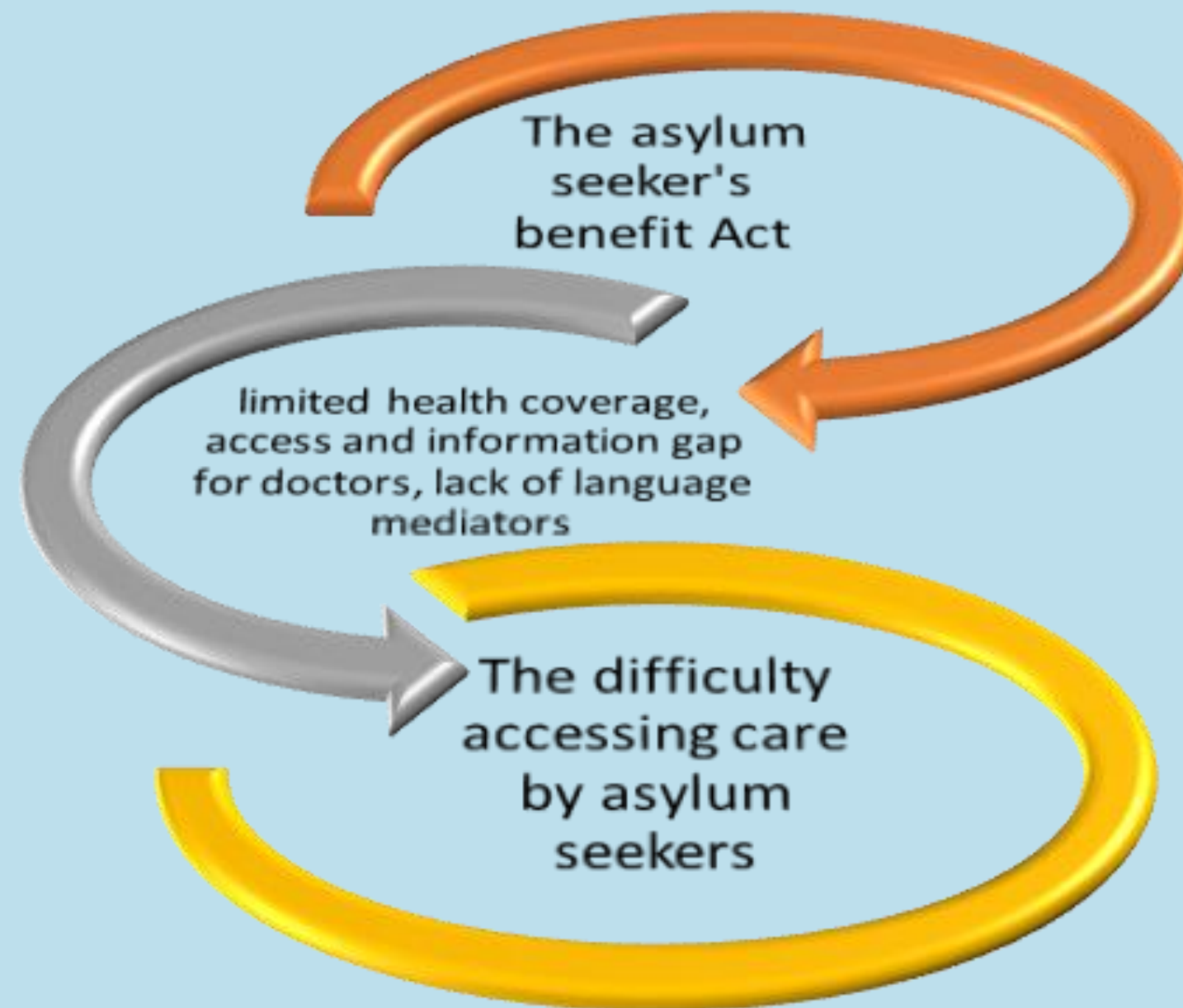


# Queer people in general camp





# Limited access to treatment







# period between AsylbLG and ALG II



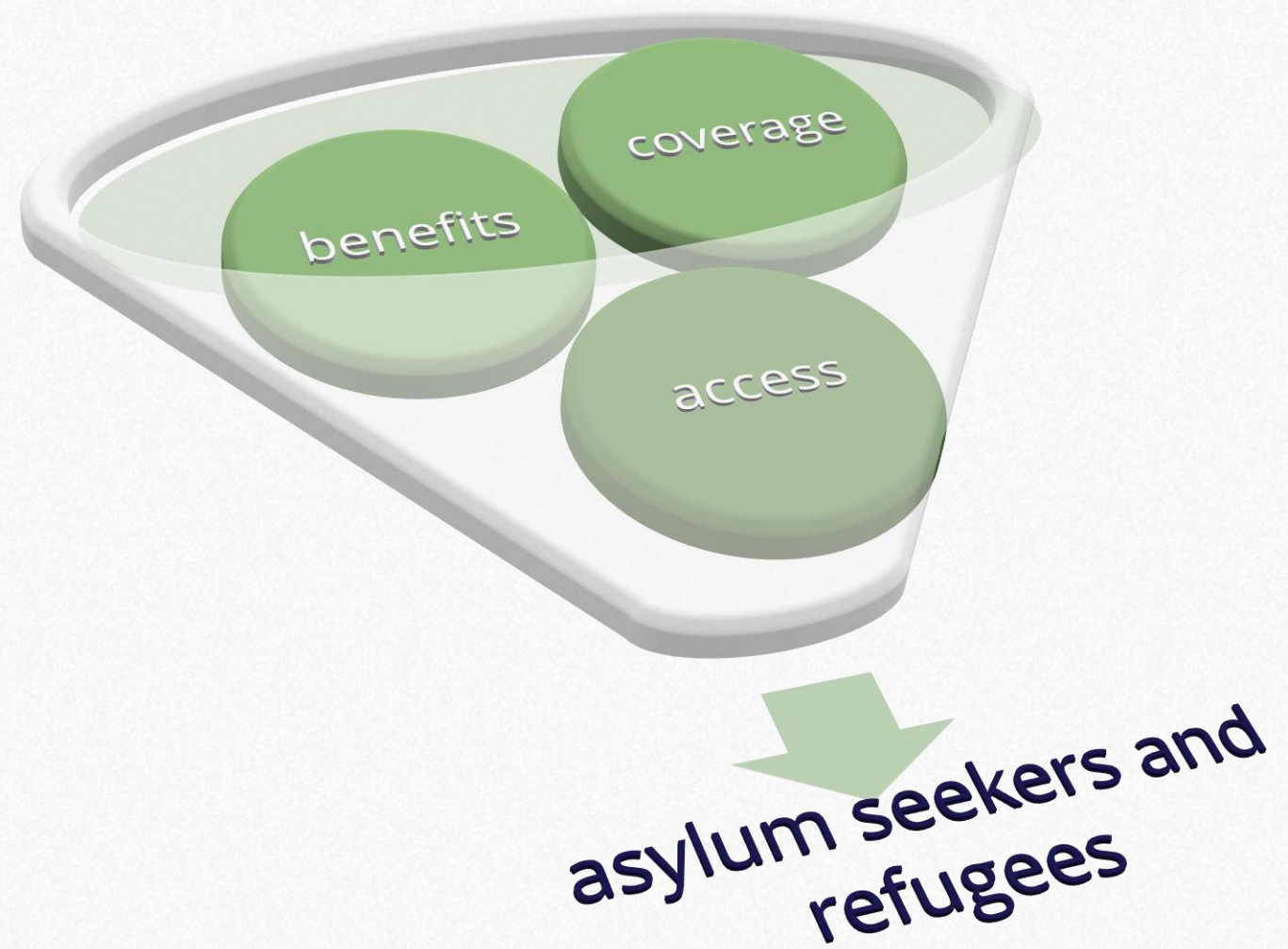
Landratsamt  
(AsylbLG)



Job-center  
(ALG II)



# Conclusion





# Thank you for your attention!

**For further information, please contact:**

**[Ifunanya.Dimaku@aerztederwelt.org](mailto:Ifunanya.Dimaku@aerztederwelt.org)**

**[michelle.kerndl-oezcan@aerztederwelt.org](mailto:michelle.kerndl-oezcan@aerztederwelt.org)**